

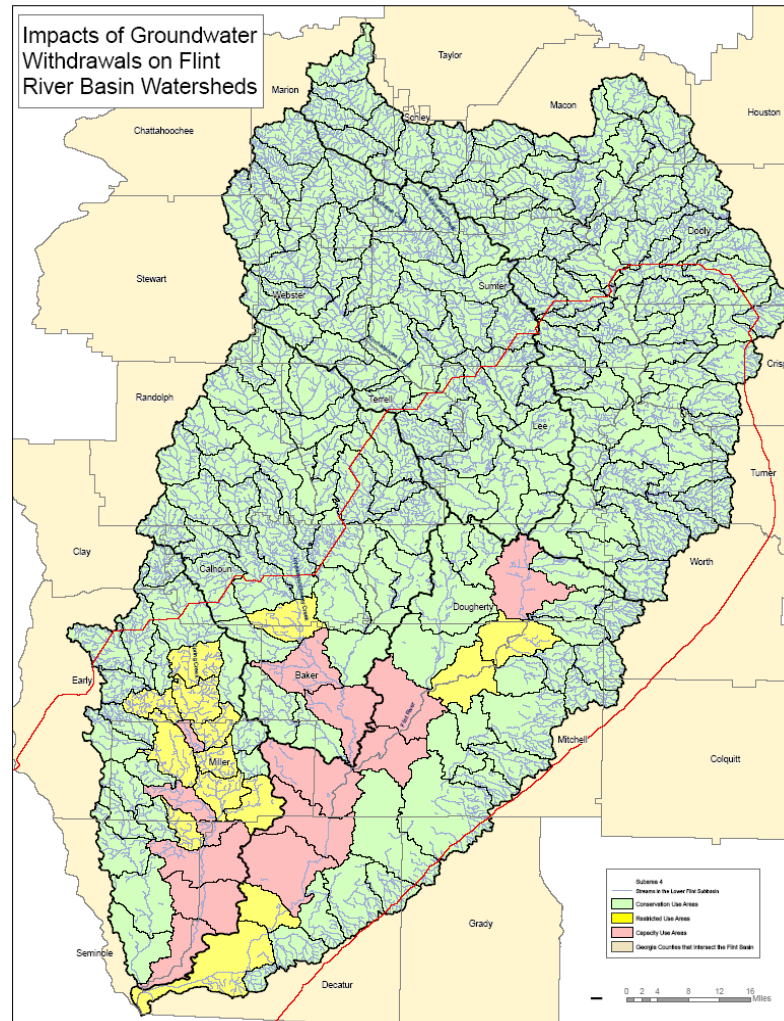


GEORGIA
DEPARTMENT OF NATURAL RESOURCES

ENVIRONMENTAL PROTECTION DIVISION

Flint River Basin Permit Suspension Modification Update

Stripling Irrigation Park
February 6, 2025



FLINT RIVER BASIN

RED,
YELLOW,
GREEN
ZONES



MODIFYING THE 2012 SUSPENSION

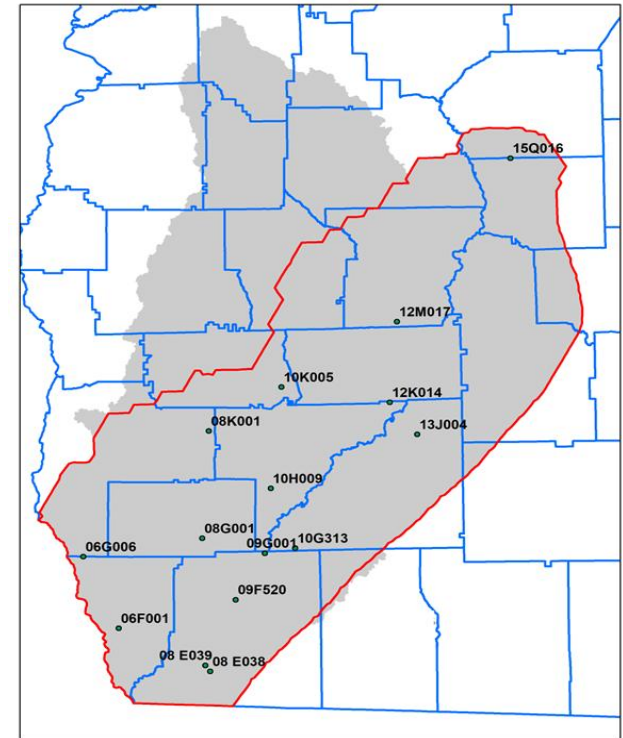
- **MODIFYING** the 2012 Suspension (not LIFTING)
- Surface Water Withdrawals: The 2012 suspension will remain in place for the Flint. No new surface water withdrawals or expanded permitted surface water withdrawals.
- Permit Types (does not apply to Claiborne Aquifer Wells):
 - A) **Unrestricted Permit** – An option for permit holders that are out of compliance on their existing FRB wells installed prior to 2000 (red zone) or prior to 2012 (green and yellow). Consistent with FRB 2006 Plan.
 - B) **Drought Restricted Permit** – An option for new water sources and irrigated acres. Restricted from use during drought periods.
 - C) **Volumetric Limited Permit** – An option for permit holders that are out of compliance on sources and acres. Will rely on the basin average application depth during the most critical drought year (2011) which was 15.94 inches.

* **Consistent with FRB Plan (2006):** 25-year terms, Irrigation Efficiency Requirements, Water Conservation Plan, Metering



DROUGHT RESTRICTION DETERMINATION

- EPD will use data from 15 USGS monitoring wells located in the suspension area.
- EPD developed a trigger: if any five of the 15 wells fall below their monthly 10th percentile water level, the entire suspension area is placed under drought restrictions.
- EPD checked the trigger level against historic data:
 - A six-month precipitation deficit of 7-8 inches correlates well to the trigger.
 - The trigger clearly identifies significant droughts (2000, 2002, 2007, 2011, 2012) and does not capture any non-drought years.





TAKE HOME NOTES!

- Clairborne wells are still available
- Now is the time to get in compliance, but there are options and you need to take one of them!
- Can drill a Floridian well but with drought restrictions that will affect pumping at likely the most needed time
- Nothing can be done as for SW expansion in Basin

Thank You for Your Kind Attention!



**UNIVERSITY OF
GEORGIA**

College of Agricultural & Environmental Sciences
Bleckley County Cooperative Extension

David Hall

Water Educator / Program Assistant

165 East Peacock Street | Cochran, GA 31014

TEL 478-934-3220 | FAX 478-934-3208 | CELL 478-697-5362

david.hall1@uga.edu

extension.uga.edu/bleckley

